

OPERATING INSTRUCTIONS FOR A

MIGHTY MAC SHREDDER - GRINDER

GENERAL

1. Whenever you operate your shredder-grinder, wearing gloves and safety glasses is recommended. Always keep hands out of hoppers. If necessary to push material into the machine, use a wood stick. Do not allow others in the area of the operating machine.

2. Lubricate the two rotor bearings before operating and after every 20 hours of operation with multi-purpose bearing lubricant. Also check the bearing collar set screws regularly to be sure they are tight.

3. Adjust the baffle plate (Part No. 900-0010) to direct the material discharge downward or away from the shredder, as you wish. Whenever you are composting without the perforated screen, be certain the baffle plate is held away from the rotor by its support rod (Part No. 500-0015) at the center of the discharge end.

SHREDDING

4. When material being processed is dry, brittle or hard, use the standard 1" perforated screen in the shredder. For wet, soggy materials the "Mighty Mac" will shred better without the screen. An optional bar screen can be used for shredding green fibrous materials such as corn stalks, wet straw or manure. After processing wet or soggy materials, the shredding chamber can be cleaned quickly by re-installing the screen and grinding a few branches or wood chips.

5. If optional screens with 1/4", 1/2", or 3/4" perforations are being used for grinding materials into compost for potting soil, all material should first be processed through the 1" screen. Replace this screen with the one with smaller perforation and process the material a second time.

6. When grinding green or damp material, first remove the perforated screen from your shredder. (Always stop the shredder before removing the screen). When operating the shredder, feed material into the hopper slowly. Corn stalks and larger branches should be held by hand and fed in slowly, six or seven at a time, until the last 18" remain in your hand, then let go. This resulting product will be shredded but not finely ground. Mix the shredded material with other compost and feed it through again.

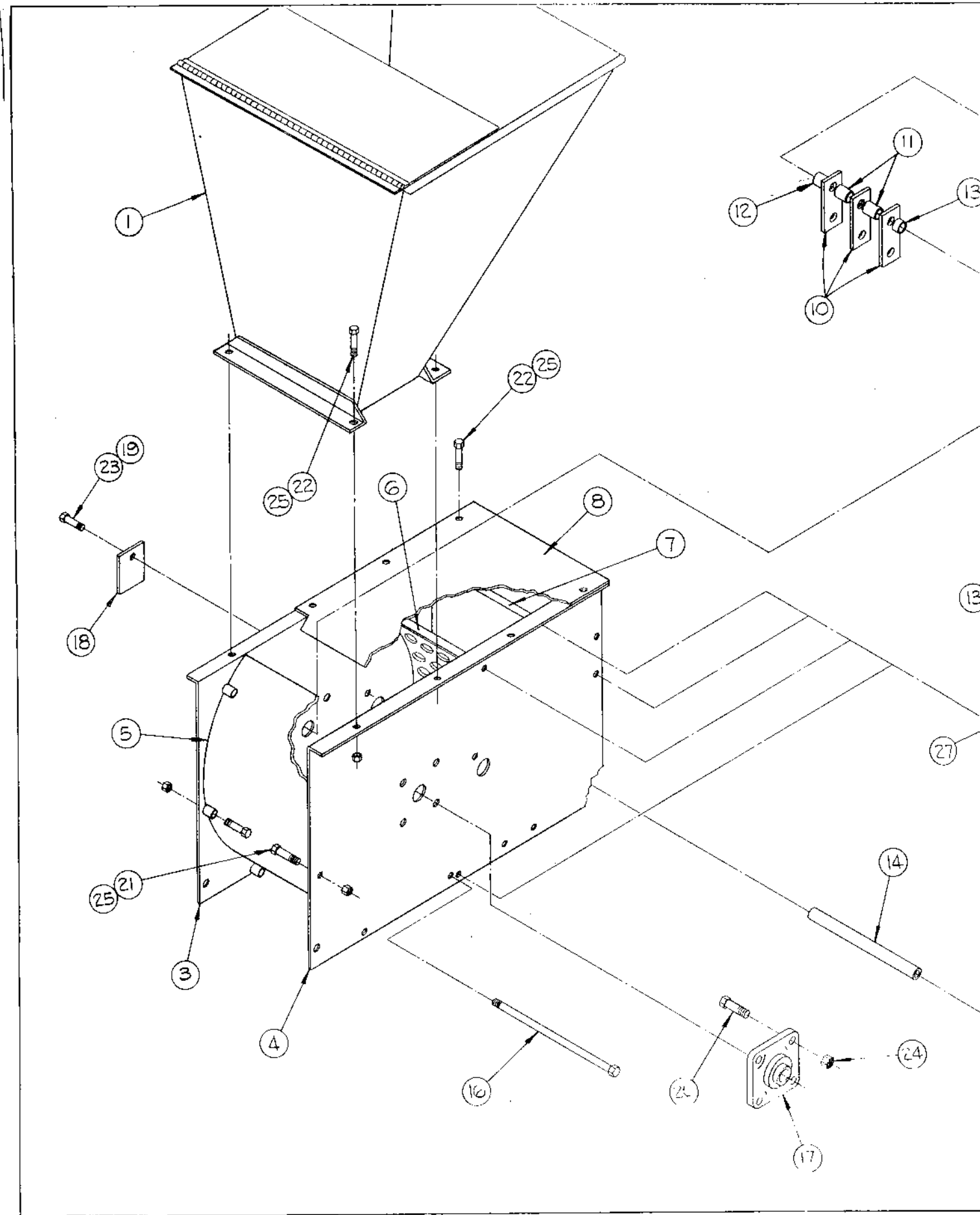
7. When the hardened steel hammers become dull on the cutting edge they may be reversed. By removing the cover plates (key no. 18 on the basic drawing), the hammer rod access holes are revealed. A hammer rod can be removed through this access hole and the hammers reversed as the rotor is reassembled. **EXTREME CARE MUST BE TAKEN TO REINSTALL THE SPACERS (Key no. 11, 12 and 13) IN EXACTLY THE SAME ORDER AS SHOWN ON THE DRAWING.**

PHONE: 215-495-7181

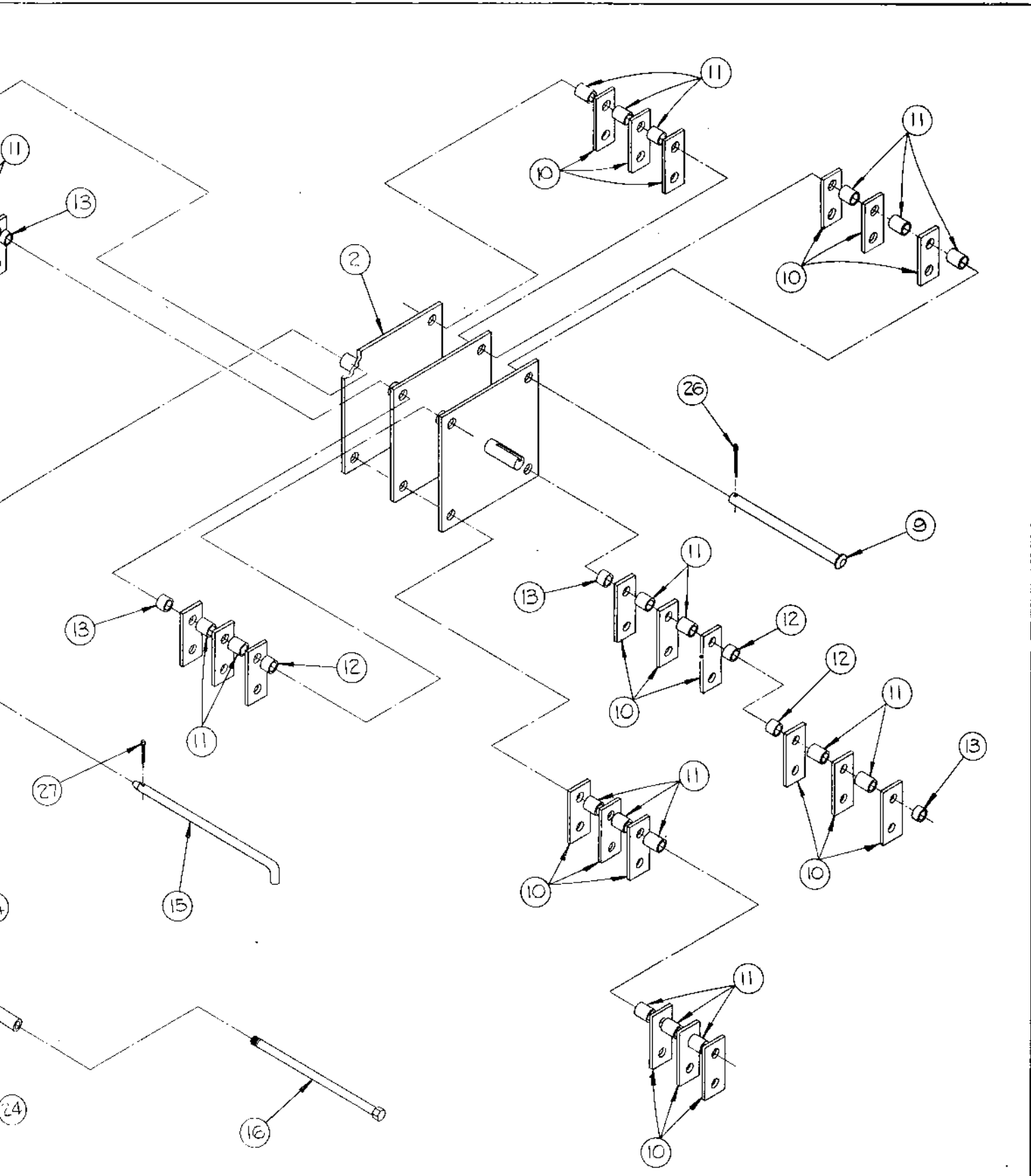
AMERIND - MacKISSIC

P.O. BOX 111
PARKER FORD, PENNA.
19457

FORM 9RH575



10/22/87



AMERIND-MACKISSIC INC PARKER FORD, PA.
BASIC 9P SHREDDER, R.H. PARTS LIST AND ASSY
DWG NO. 900-0051

BASIC 9P SHREDDER, R.H. PARTS LIST

900-0051

<u>Key No.</u>	<u>Part No.</u>	<u>Description</u>	<u>Quantity</u>
1	900-0046	Hopper	1
2	900-0006	Rotor	1
3	900-0048	Left Side Plate	1
4	900-0047	Right Side Plate	1
5	900-0005	Scroll	1
6	500-0004	Screen	1
7	900-0010	Baffle Plate	1
8	900-0045	Top	1
9	500-0009	Hammer Rod	4
10	500-0008	Hammer	24
11	500-0011	Spacer, 7/8	20
12	500-0012	Spacer, 5/8	4
13	500-0010	Spacer, 5/16	4
14	500-0020	Spacer	1
15	500-0015	Screen and Baffle Rod	4
16	500-0022	Tie Rod	2
17	500-0016	Bearing	2
18*	900-0040	Cover Plate	1
19*	020-0004	Lock Washer Nut	1
20	3/8-16 x 1 1/4	S.A.E. No. 5 Cap Screw	8
21	5/16-18 x 1 1/4	S.A.E. No. 5 Cap Screw	6
22	5/16-18 x 3/4	S.A.E. No. 5 Cap Screw	8
23*	5/16-18 x 5/8	Hex Cap Screw	1
24	3/8-16	Lock Nut	8
25	5/16-18	Lock Nut	16
26	3/16 x 1	Cotter Pin	4
27	3/32	Hair Cotter Pin	4

*TWO FURNISHED ON TRACTOR MOUNTED MODELS

WHEN ORDERING, ALWAYS REFER TO THE PART BY THE PART NUMBER